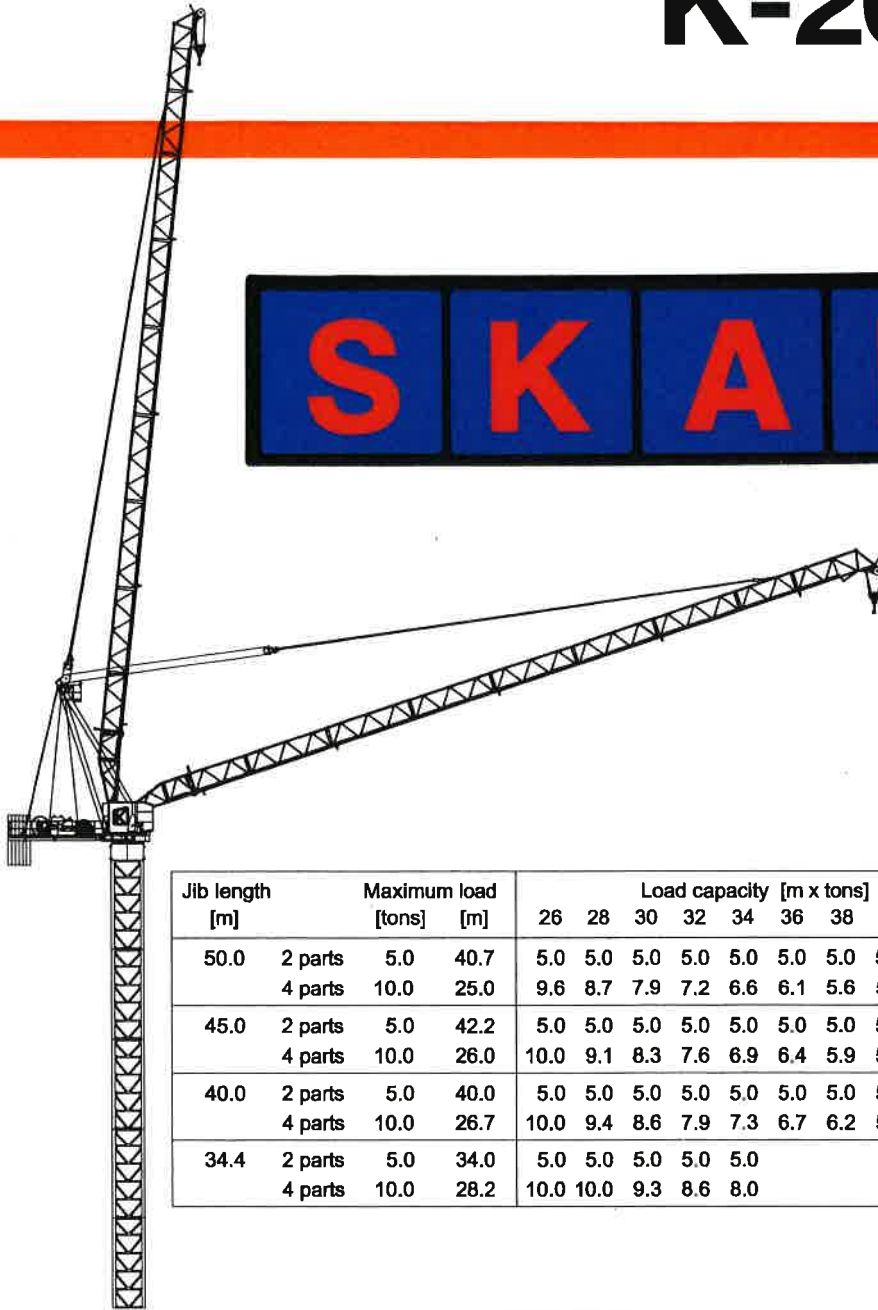


TECHNICAL
DATA

K-200L

S K A B



Jib length [m]	Maximum load [tons]	Maximum load [m]	Load capacity [m x tons]											
			26	28	30	32	34	36	38	40	45	50		
50.0	2 parts	5.0	40.7	5.0	5.0	5.0	5.0	5.0	5.0	5.0	5.0	5.0	4.2	3.5
	4 parts	10.0	25.0	9.6	8.7	7.9	7.2	6.6	6.1	5.6	5.1	4.2	3.5	
45.0	2 parts	5.0	42.2	5.0	5.0	5.0	5.0	5.0	5.0	5.0	5.0	5.0	4.5	
	4 parts	10.0	26.0	10.0	9.1	8.3	7.6	6.9	6.4	5.9	5.4	4.5		
40.0	2 parts	5.0	40.0	5.0	5.0	5.0	5.0	5.0	5.0	5.0	5.0	5.0		
	4 parts	10.0	26.7	10.0	9.4	8.6	7.9	7.3	6.7	6.2	5.8			
34.4	2 parts	5.0	34.0	5.0	5.0	5.0	5.0	5.0						
	4 parts	10.0	28.2	10.0	10.0	9.3	8.6	8.0						



KRØLL CRANES A/S

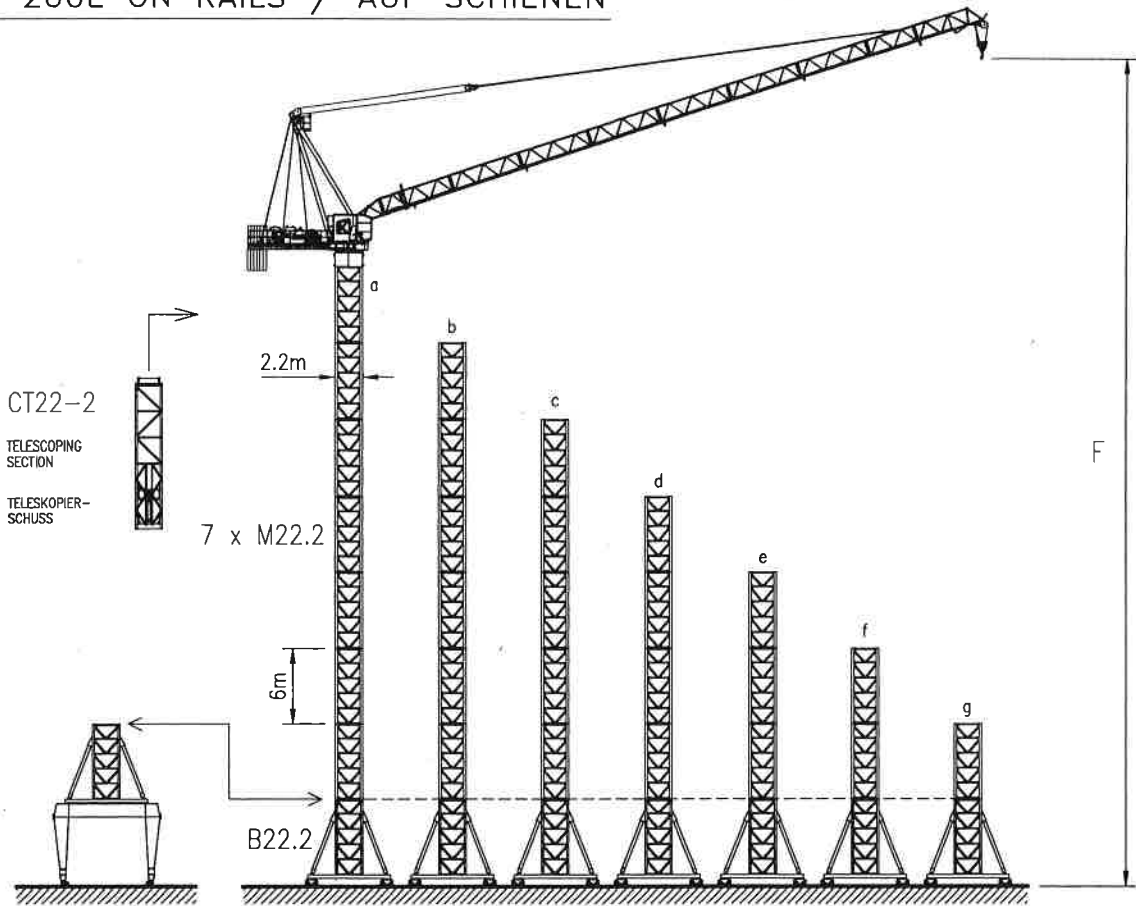
Nordkranvej 2 . DK-3540 Lyngby . Denmark . Phone: +45 48 18 74 00 . Fax: +45 48 18 88 07
E-mail: krollcranes@krollcranes.dk . www.krollcranes.com

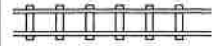
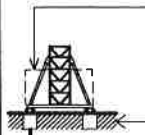

A MEMBER OF





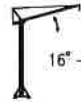

MUHIBBAH ENGINEERING




K-200L ON RAILS / AUF SCHIENEN



			a	b	c	d	e	f	g
HOOK HEIGHT / HAKENHÖHE	F	m	63	57	51	45	39	33	27
 RAIL GAUGE / SPURWEITE		m	6						
BALLAST		t	100	75	58	52	46	42	42
 PARKING FOUNDATIONS / PARKIERUNGSFUNDAMENTE	x4	t	4	0	0	0	0	0	0
 CORNER PRESSURE / ECKDRUCK	IN SERVICE / IM BETRIEB	kN	1140	1040	960	890	830	770	720
	OUT OF SERVICE / AUSSER BETRIEB	kN	1560	1280	1050	850	660	520	430

 3 x 380-440 V 50-60 Hz	CONTROL VOLTAGE / STEUER SPANNUNG 24 VDC - 220 VAC
---	---

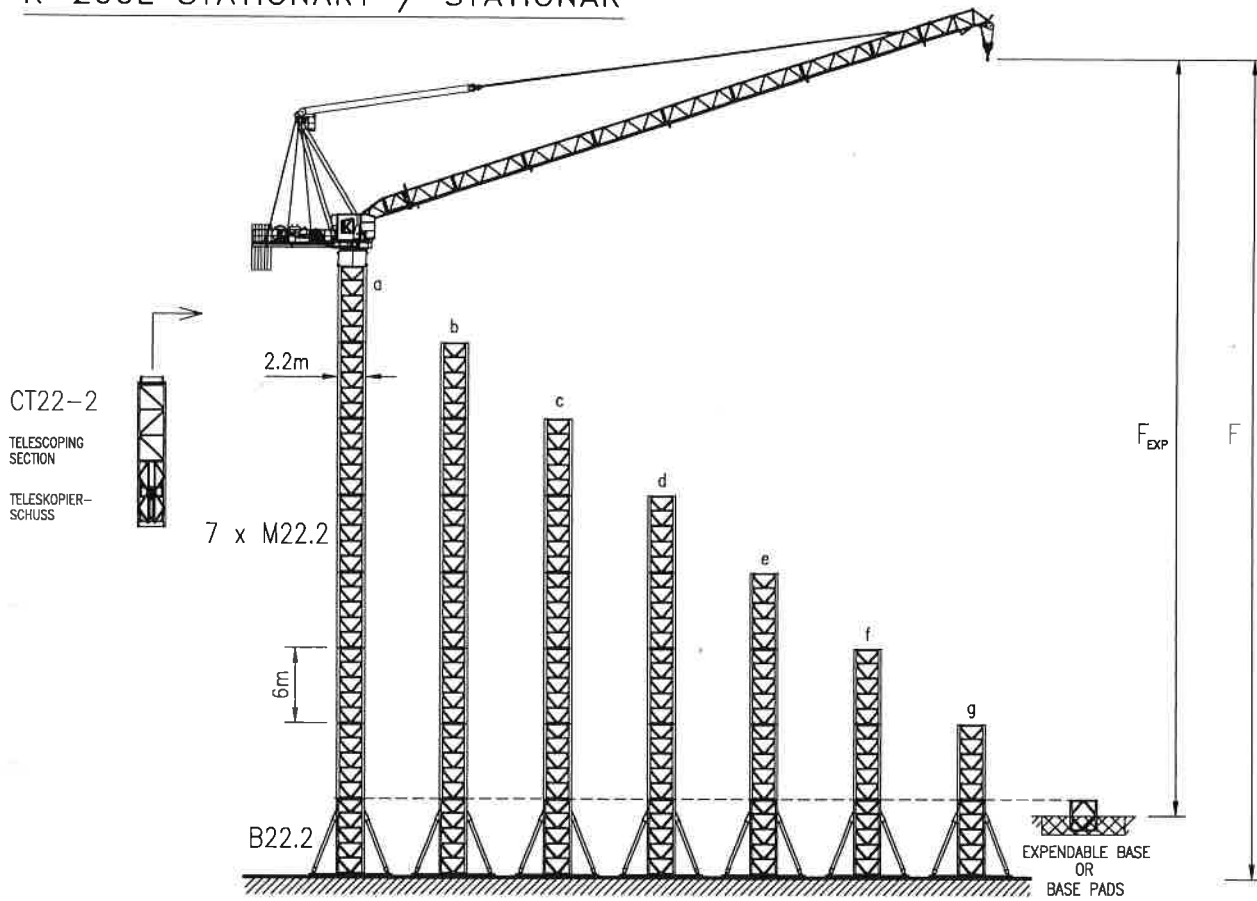
	1 x 5 kW	0 - 0.7 RPM
 16°-84°	56 kW	STEPLESS / STUFENLOS 2:00 min
	4 kW units	25 m/min

 HOIST WINCH / HUBWERK	56 kW
POWER CONSUMPTION / STROMVERBRAUCH	150 kVA 160 Amps
POWER CABLE / HAUPTKABEL	0-100 m: 4G70 100-175 m: 4G70 175-250 m: 4G95
 0-2500 kg	0 - 100 m/min
2500-5000 kg	0 - 60 m/min
 0-5000 kg	0 - 50 m/min
5000-10000 kg	0 - 30 m/min

HOIST WIRE / HUB-SEIL	ø18 mm	FILL FACTOR 0.65	1770 MPa BREAKING STRESS / BRUCHSPANNUNG
	56 kW HOIST WINCH		
	350 m		
	>350 m *		
LUFFING WIRE / EINZIEHSEIL	ø22 mm	FILL FACTOR 0.65	1770 MPa BREAKING STRESS / BRUCHSPANNUNG

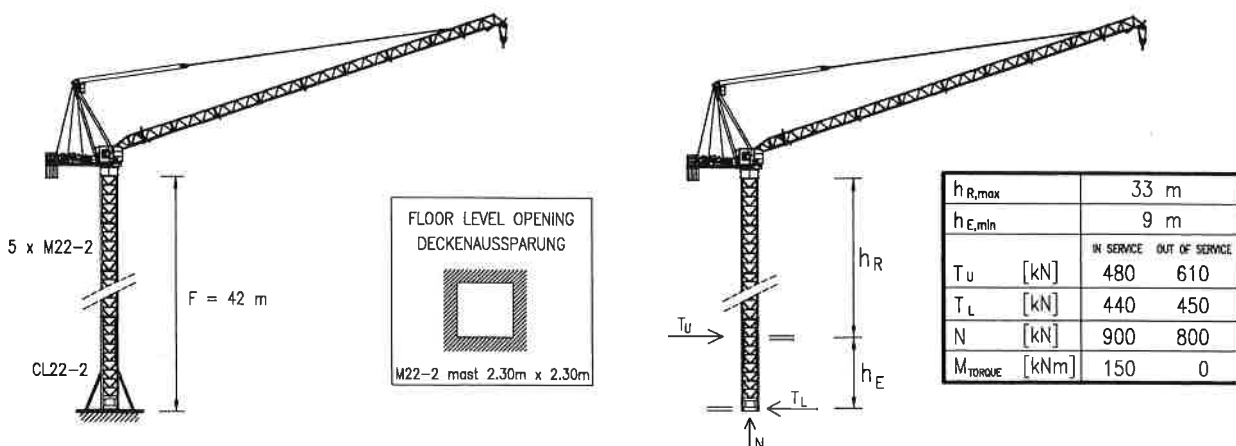
* CONSULT KRÖLL CRANES A/S - NEHMEN SIE MIT KRÖLL CRANES A/S KONTAKT AUF

K-200L STATIONARY / STATIONÄR

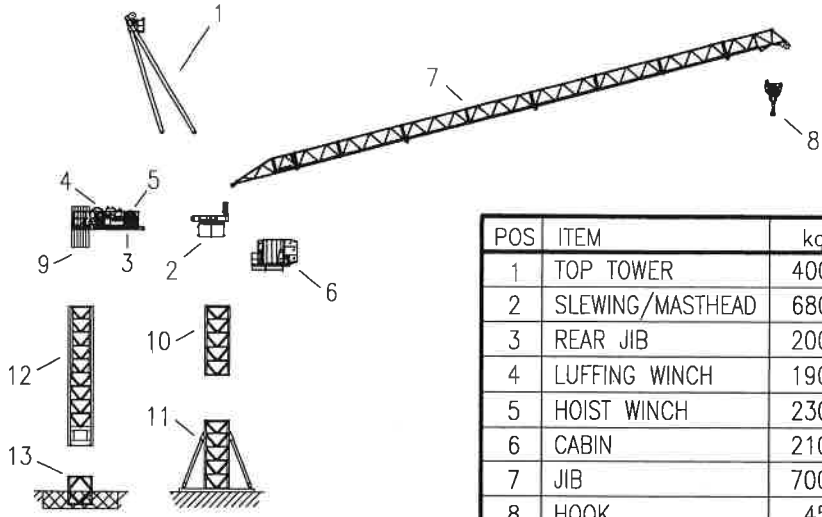


			a	b	c	d	e	f	g
HOOK HEIGHT / HAKENHÖHE	F	m	63	57	51	45	39	33	27
 CORNER PRESSURE ECKDRUCK 6m	BALLAST	t	114	79	57	52	47	44	43
	IN SERVICE IM BETRIEB	kN	1090	1010	930	870	810	760	720
	OUT OF SERVICE AUSSER BETRIEB	kN	1520	1270	1040	840	650	510	420
 FOUNDATION WEIGHT FUNDAMENTSGEWICHT min 200 kN/m ²	$B \times B \times H$	F	m	63	57	51	45	39	27
	$H=1.0m$	B	m	8.5	7.9	7.4	7.0	7.0	7.0
		ton	166	144	126	113	113	113	113
 FOUNDATION WEIGHT FUNDAMENTSGEWICHT min 200 kN/m ²	$B \times B \times H$	F_{EXP}	m	58	52	46	40	34	28
	$H=1.4m$	B	m	7.6	7.1	6.6	6.3	6.2	6.1
		ton	186	162	140	128	123	120	116

K-200L CLIMBER / KLETTERKRAN

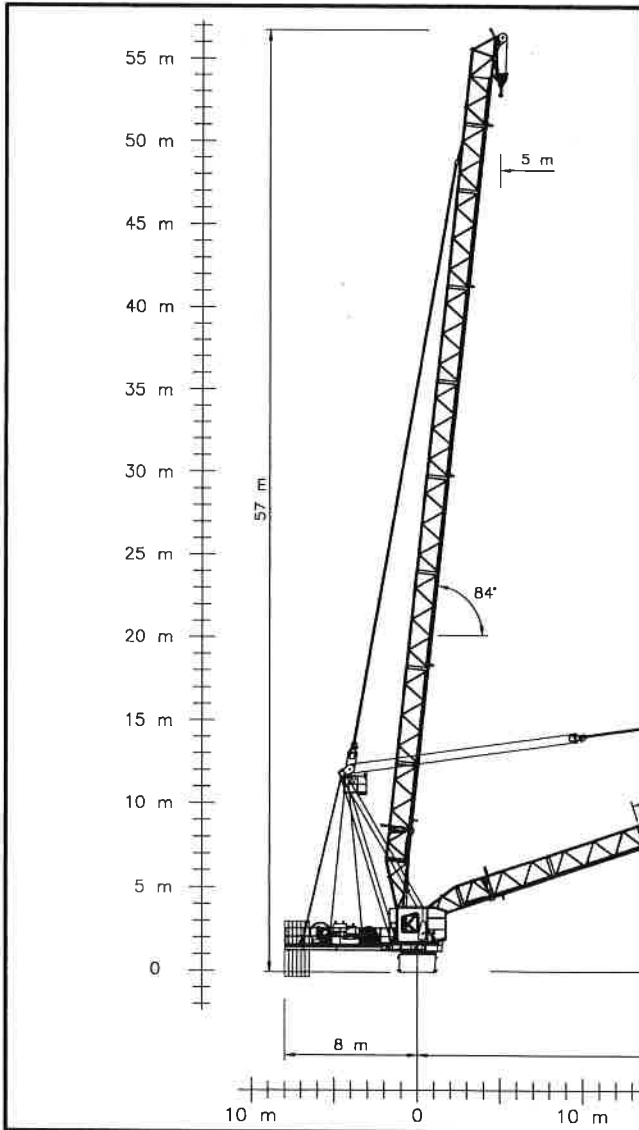


APPROX. ERECTION WEIGHTS
UNGEFÄHRE MONTAGEGEWICHTE



POS	ITEM	kg
1	TOP TOWER	4000
2	SLEWING/MASTHEAD	6800
3	REAR JIB	2000
4	LUFFING WINCH	1900
5	HOIST WINCH	2300
6	CABIN	2100
7	JIB	7000
8	HOOK	450

POS	ITEM	kg
9	COUNTERWEIGHT	16000
10	M22-2 (6m)	4020
11	B22-2 (6m)	10500
12	CL22-2 (12m)	10400
13	N22-2	2400
14		
15		
16		



JIB	STAY COMBINATION [mm]
50.0	2x6100, 1x3655, 1x5315, 1x5630, 1x5765, 1x1300 1x4025
45.0	2x6100, 1x3655, 1x5315, 1x5630, 1x5765, 1x1300
40.0	2x6100, 1x3655, 1x5315, 1x5630, 1x1300
34.4	2x6100, 1x3655, 1x5315, 1x1300
28.8	2x6100, 1x3655, 1x1300

EXTRA EQUIPMENT AVAILABLE
WALL TIE FRAMES, CABLE DRUMS, CURVE RUNNING AND 90° TURN BOGIES, ELEVATOR, FLOOD LIGHTING.

ZUSÄTZLICHE AUSRÜSTUNG VERFÜGBAR
EINSPANNRAHMEN, KABELTROMMEL, KURVENFAHRENDE UND 90° DREHSCHEMEL, AUFZUG, SCHEINWERFER.

THE DESIGN AND TECHNICAL SPECIFICATIONS GIVEN ARE APPLICABLE TO THE STANDARD MACHINE OF CRANE K-200L. MODIFICATIONS ACCORDING TO SPECIAL REQUIREMENTS REGARDING FOR EXAMPLE HOOK HEIGHT, JIB LENGTH, RAIL GAUGE, ETC.. ARE AVAILABLE. PLEASE CONTACT KRÖLL CRANES A/S.

DIE KONSTRUKTIONS- UND TECHNISCHE DATEN BEZIEHEN SICH AUF DIE STANDARDAUSFÜHRUNG DES KRANTYPS K-200L. INDIVIDUELLE FORDERUNGEN Z.B AN HAKENHÖHE, AUSLEGERLÄNGE, SPURWEITE USW. KÖNNEN BERÜCKSICHTIGT WERDEN. NEHMEN SIE MIT KRÖLL CRANES A/S KONTAKT AUF.

CONVERSION OF THE UNITS FOR FORCES UMRECHNUNG DER EINHEITEN FÜR KRÄFTE	10 N = 1 kg 10 kN = 1 ton	SUBJECT TO ALTERATIONS ÄNDERUNGEN VORBEHALTEN	F.E.M	DATA SHEET DATENBLATT	K-200L 010401
---	------------------------------	--	-------	--------------------------	------------------