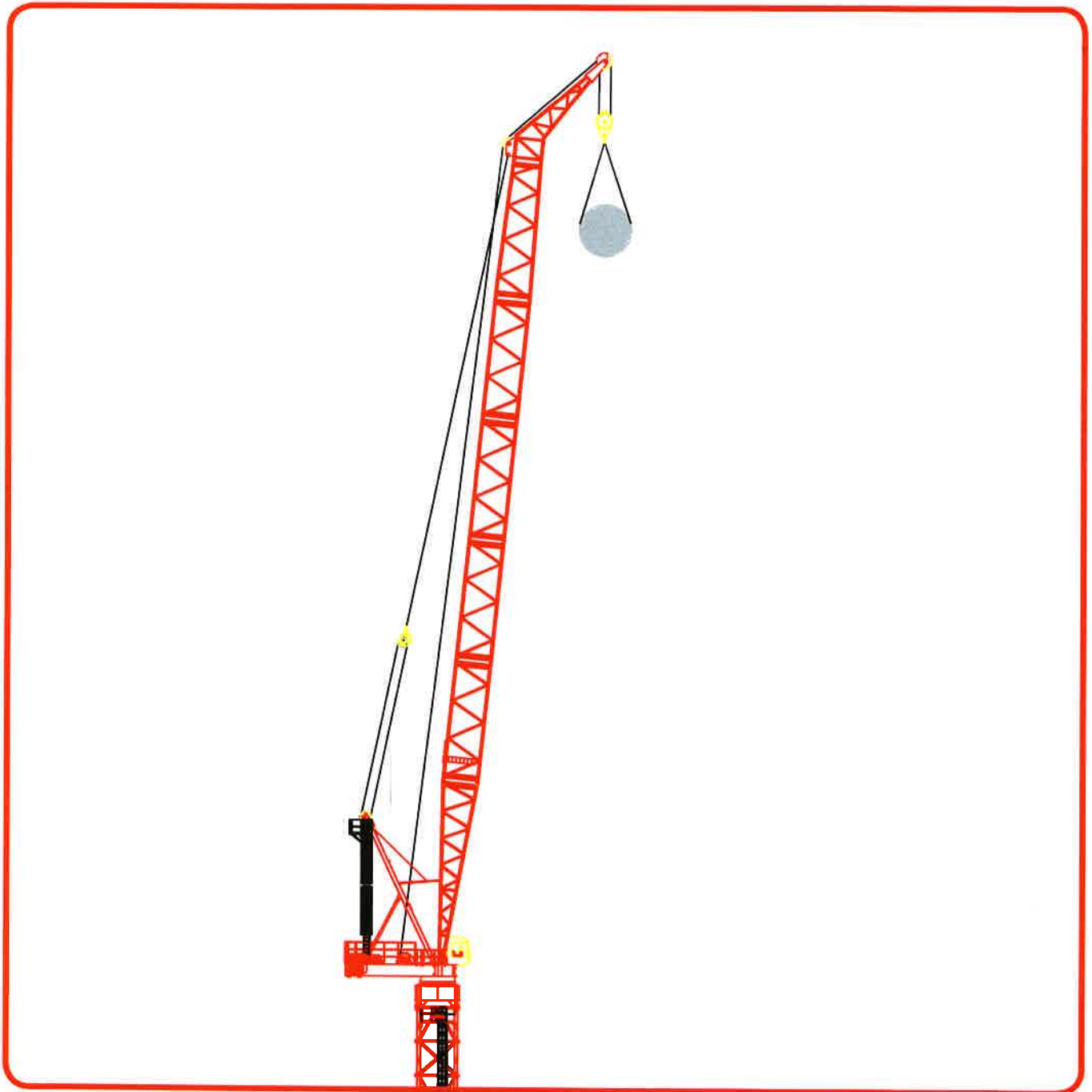




KRØLL CRANES



F.E.M 1.001-HC1/A3/E3



**LUFFING BOOM
TOWER CRANE**

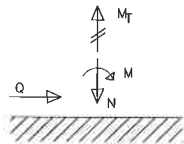
K440L

36 tonnes Max

ERECTED DIMENSIONS

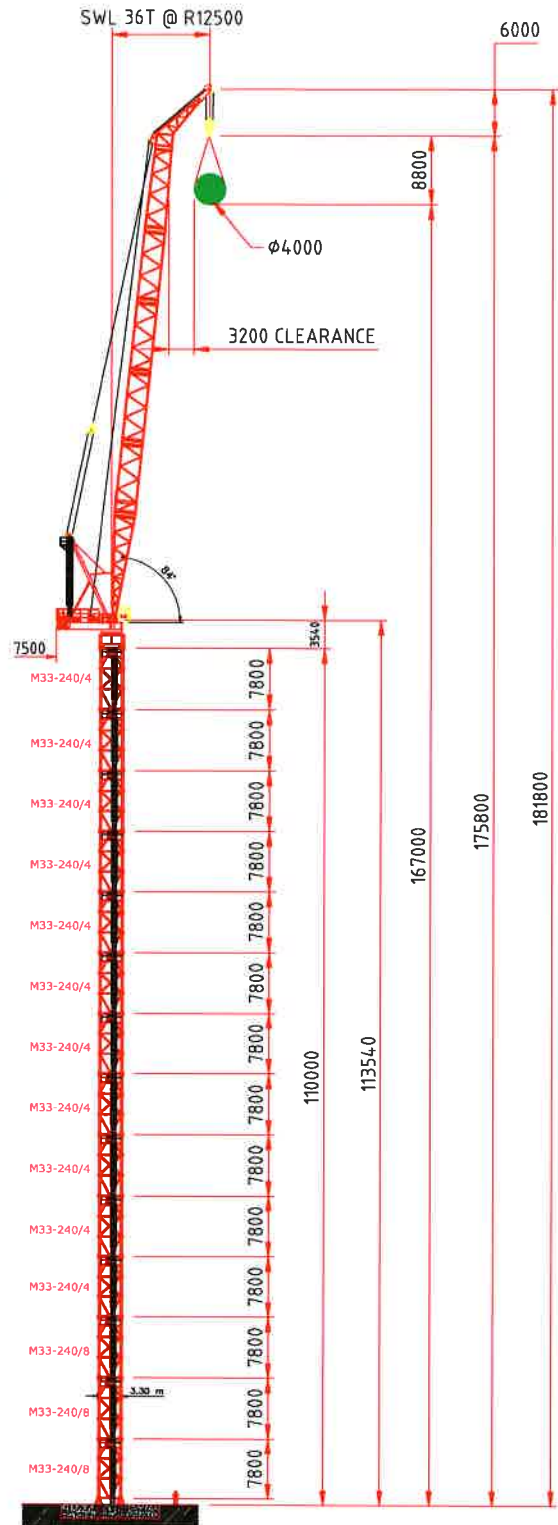
Lifts above 60 tonnes are limited to 18 m/s wind speed

FORCES AT GROUND LEVEL






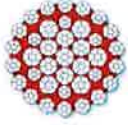


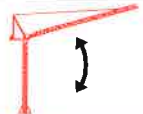


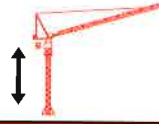
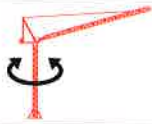


BASE FORCES, 167.0 m (110.0 m mast)

Wind speed	IN SERVICE	OUT OF SERVICE
	20 m/s	42 m/s
M (kNm)	12850	29450
N (kN)	4600	3980
Q (kN)	120	420
M _T (kNm)	800	0
Corner comp. (kN)	4300	8350
Corner tension (kN)	2150	6450
Deflection, masth. (m)	0.800	1.400
Tilt, masth. (degrees)	0.550	0.800



LOAD CHARTS

Radius	Boom Length	
	69.0 m	
	Boom Angle	2 parts
[m]	[Degrees]	[Kg]
10.1	86.0	36,000
12.5	84.0	36,000
15.0	81.9	36,000
17.5	79.8	36,000
20.0	77.6	34,800
22.5	75.5	30,500
25.0	73.3	27,000
27.5	71.0	23,400
30.0	68.8	20,300
32.5	66.5	17,700
35.0	64.1	15,400
37.5	61.7	13,400
40.0	59.2	11,700
42.5	56.6	10,700
45.0	54.0	8,800
47.5	51.2	7,600
50.0	48.3	6,500
52.5	45.3	5,500
55.0	42.0	4,600
57.5	38.5	3,800
60.0	34.7	3,100
62.5	30.5	2,400
65.0	25.4	1,800
67.5	18.6	1,200
68.4	15.0	1,100

HOIST WINCH MOTOR 85 kW	2-PARTS 			HOIST DRUM CAPACITY 500 m / 6 layers		
		Load 0 - 7 t 7 - 14 t 14 - 36 t		Max. Speed 36 m/min 24 m/min 12 m/min		HOIST WIRE
		Diameter	32 mm			
		Safety Factor	4.8			
		MBL	840 kN			
	LUFFING WINCH MOTOR 65 kW			LUFFING DRUM CAPACITY 147 m / 4 Layer		
	LUFFING SPEEDS			LUFFING WIRE		
	Full Load	2:00 min	Diameter	24 mm		
			Safety Factor	5.0		
			MBL	560 kN		
	CT33 CLIMBER			SLEW DRIVE Motor 2 x 11 kW		
	CLIMBING SPEEDS			SLEW SPEEDS		
	1 tower section up or down	1:00 hr		10.1 - 68.4m	0 - 0.5 rpm	
	POWER SUPPLY 400 - 480 V, 50/60 Hz			SUPPLY CABLE		
	Consumption	160 kVA		Cable Length	Cable Type	
	Main Fuse	200 A		0 - 120 m	4 x 95 mm ²	
	Recommended Generator Size	250 kVA				

All motion controls are completely stepless ensuring smooth and jerk-free operation.
Creeping speed down to 0.5% of maximum speed.

All specifications shown in the tables are for the standard version of K1500L. For special requirements regarding load charts or drive speeds, please contact Krøll Cranes A/S.

F.E.M 1.001-HC1/A3/E3

EN 14439:2009-G25



All data is subject to alteration.

