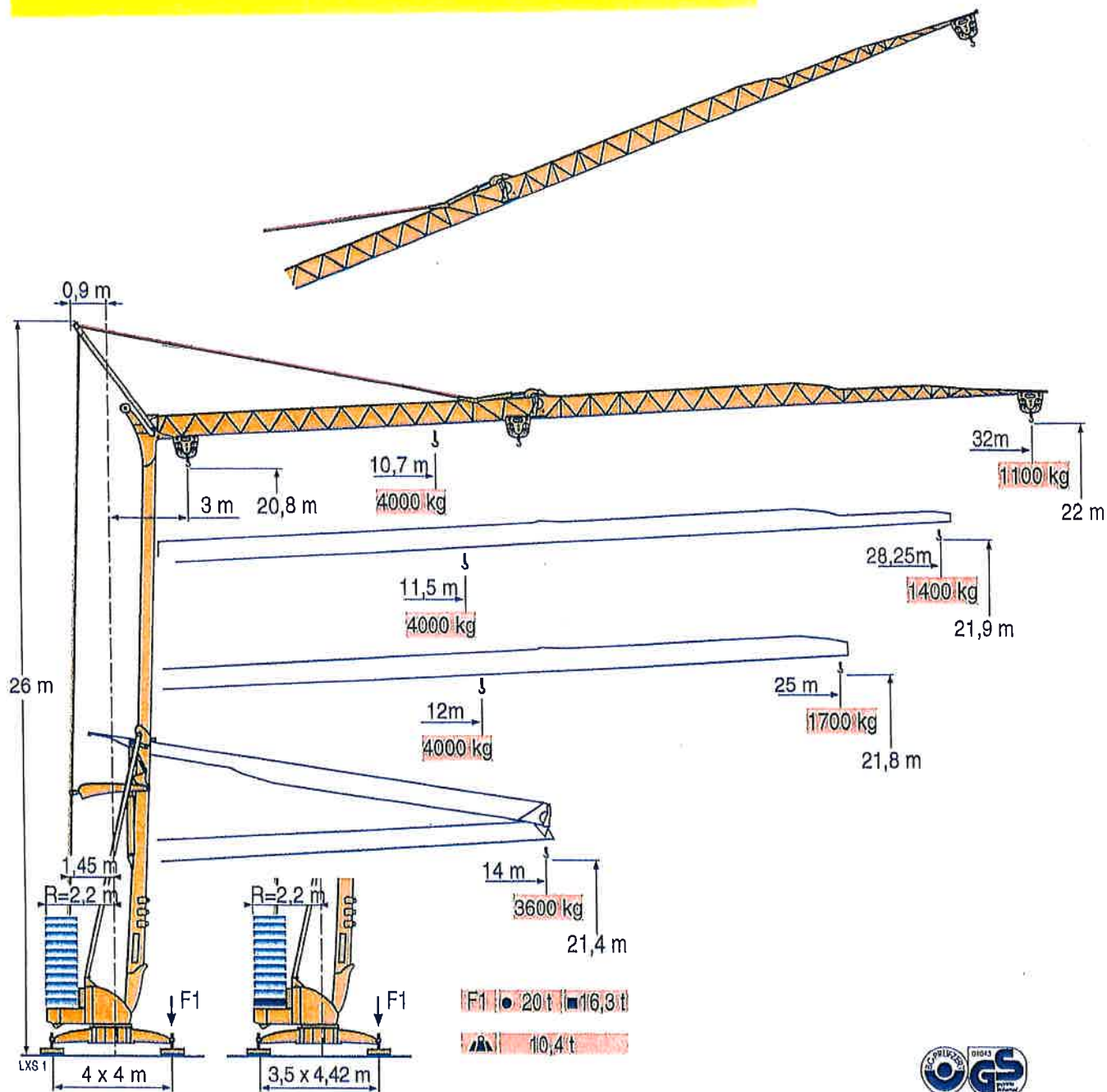


# POTAIN

## Igo 36

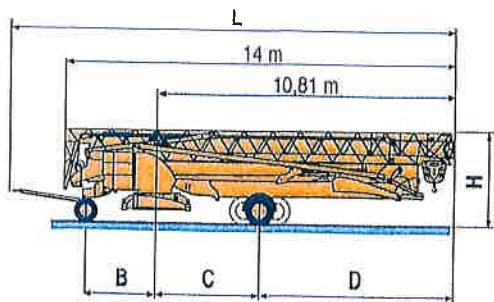
### Svenska Kran AB



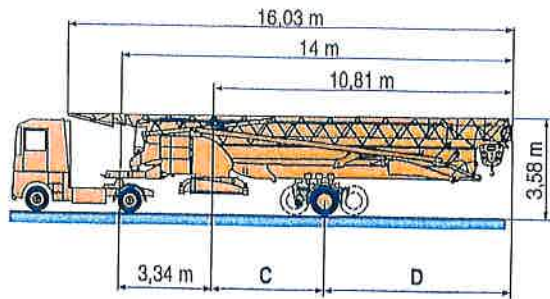
CE FEM 1.001-A3

**Manitowoc**  
Crane Group

			L (m)	B (m)	C (m)	D (m)	H (m)
Transport	<b>DS61/S120</b>	○					
Transport	<b>DS61/S125</b>		15,9	2,45	3,73	7,08	3,05/3,2
Transport	<b>DJ80/S120</b>	○	15,9	2,45	3,73	7,08	3,05/3,2
Transporte	<b>DJ80/S125</b>		15,9	2,45	4,15	6,66	3,1
Trasporto	<b>DJ80/S125</b>		15,9	2,45	4,15	6,66	3,1
Transporte	<b>DJ100/S120</b>		16,33	2,45	4,15	6,66	3,23
	<b>DJ105/S125</b>		16,33	2,45	4,15	6,66	3,23
	<b>DJ126M/S125</b>		16,35	2,45	4,15	6,66	3,2
	<b>DJ126M/S215M</b>		17,14	3,24	4,07	6,74	3,55



		C (m)	D (m)
<b>SL122/J215M</b>			
<b>SL121/J135</b>	SL122/J215M	4,07	6,74
<b>SL121/S215M</b>	SL121/J135	4	6,66
	SL121/S215M	4,07	6,74



	F	D	GB	E	I	P
○	Chanlier	Baustelle	Site	Obra	Canliere	Estaleiro

Document commercial non contractuel. Pour toute information technique se référer à la notice correspondante

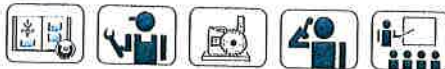
Unverbindliches Vertriebsdokument. Für technische Informationen, siehe die entsprechenden Anweisungen.

This commercial document is not legally binding. For any technical information, please refer to the corresponding instructions.

Documento comercial no contractuel. Para cualquier información técnica, ver la noticia correspondiente.

Documento commerciale non vincolante, per tutte le informazioni tecniche fare riferimento al catalogo istruzioni

Documento comercial não contractual. Para qualquer informação técnica complementar consultar as respectivas instruções



**Americas**  
Tel: +1 920 683 6322  
Tel: +1 717 697 8121

**Europe - Middle East - Africa**  
Tel: +(33) 4 72 18 20 20  
Tel: +(44) 191 565 6281

**Asia - Pacific**  
Tel: +(65) 6861 7133  
Fax: +(65) 6862 4142

www.manitowoccrane.com

18, rue de Charbonnières - B.P.173  
69132 ECULLY Cedex - France

Tél. : (33) 4 72 18 20 20  
Fax. : (33) 4 72 18 20 00  
www.manitowoccrane.com www.potain.com

**Igo 36**  
Réf. 2003 48 LXS 2  
Copyright. Reproduction Interdite © POTAIN 2003

Réalisation HeadLines

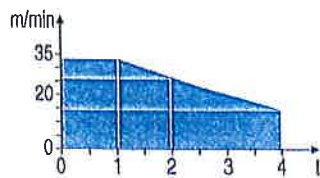


Mécanismes  
Antriebe  
Mechanisms  
Mecanismos  
Meccanismi  
Mecanismos

LX51

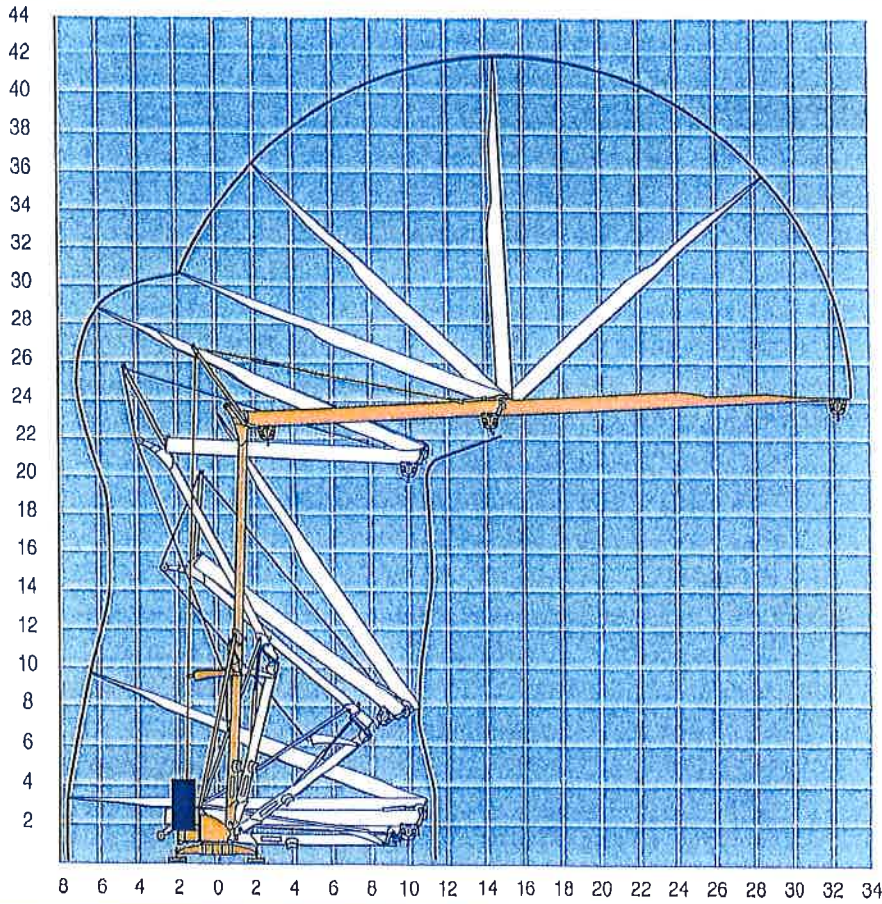
		⚙️					⚙️					ch - PS hp	kW	
⬆️	15 LVF 10 Optima	m/min	3,6	18	30	49	66						15	11
		kg	2000	2000	2000	1100	500							
		m/min	3,6	18	30	54	66	1,8	8,9	15	27	33		
		kg	2000	2000	2000	1000	500	4000	4000	4000	2000	1000		
⬅️➡️	3 DVF5	m/min	19 - 41										3	2,2
⦿	RVF2-50	tr/min U/min rpm	0 → 0,8										4	3
CEI 38		IEC 38	kVA					🎧						
400 V (+6% -10%) 50 Hz			15 LVF 10 : 22 kVA					2000/14						

15 LVF 10  
Optima



Montage  
Montage  
Erection  
Montaje  
Montaggio  
Montagem

LX51



Igo 36

POTAIN



**F**  
Levage  
Distribution  
Orientation

Conforme aux directives CEE  
sur le niveau acoustique

**D**  
Heben  
Katzfahren  
Schwenken

Gemäss EWG-Richtlinien für  
den Schall-Leistungspegel

**GB**  
Holsting  
Trolleying  
Slewing

In compliance with the EEC  
Instructions on noise level

**E**  
Elevación  
Distribución  
Orientación

Conforme con las directivas  
CEE sobre el nivel acústico

**V**  
Sollevamento  
Distribuzione  
Rotazione

Conforme alle direttive CEE  
sul livello acustico

**P**  
Elevação  
Distribuição  
Rotação

Conforme as directivas CEE  
sobre o nível acústico

Courbes de charges

Lastkurven

Load diagrams

Curvas de cargas

Curve di carico

Curva de cargas

LX51



10,7	11	12	13	14	15	16	17	18	19	19,5	20	22	25	27	30	32 m
4000	3870	3740	3610	3480	3350	3220	3090	2960	2830	-	1820	1615	1375	1250	1090	1000
2000 1940 1790 1485 1350 1190 1100 kg																

11,5	12	13	14	15	16	17	18	19	20	21	22	25	27	28,3 m		
4000	3790	3620	3450	3280	3110	2940	2770	2600	2430	2260	2090	1780	1520	1375	1300	
2000 1890 1620 1480 1400 kg																

12	13	14	15	16	17	18	19	20	21	21,8	23	25 m
4000	3600	3280	3010	2775	2580	2400	2250	2110	1985	-	1775	1600
2000 1875 1700 kg												

Flèche relevée

Ausleger in Steilstellung

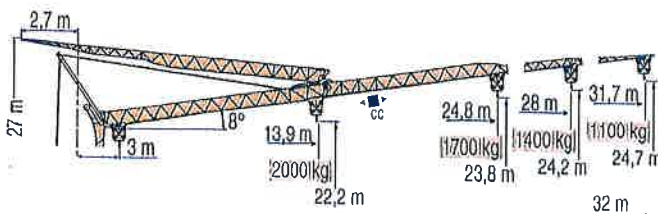
Luffing jib

Flecha izada

Braccio impennato

Lança inclinada

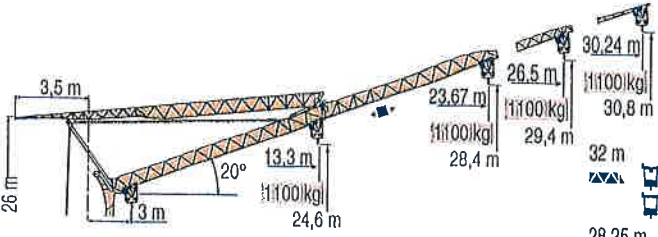
LX51



32 m	3	18,3	19	19,5	21	23	25	26	28	30	31,7 m
2000	1910	-	1685	1505	1355	1290	1175	1075	1000	1000	
2000 1830 1640 1485 1415 1295 1190 1100 kg											

28,25 m	3	19,8	20,8	21	23	25	26	28 m
2000	-	1860	1680	1500	1425	1300		
2000 1975 1770 1605 1580 1400 kg								

25 m	3	20,7	21,6	23	24,8 m
2000	-	1755	1600		
2000 1860 1700 kg					



32 m	3	30,2 m
1000	1000	1100

28,25 m	3	26,5 m
1000	1000	1100

25 m	3	23,7 m
1000	1100	

Igo 36

POTAIN

<b>F</b>	<b>D</b>	<b>GB</b>	<b>E</b>	<b>I</b>	<b>P</b>
Chariot distributeur	Verfahrbare Laukatze	Traversing trolley	Carro distribuidor	Carrellino distributore	Carro distribuidor
Chariot distributeur et courbes de charges	Verfahrbare Laukatze und Lastkurven	Traversing trolley and load diagrams	Carro distribuidor y curvas de cargas	Carrellino distributore e curva di carico	Carro distribuidor e curva de cargas
Réactions en service	Reaktionskräfte In Betrieb	Reactions In service	Reacciones en servicio	Reazioni In servizio	Reacções em serviço
Réactions hors service	Reaktionskräfte außer Betrieb	Reactions out of service	Reacciones fuera de servicio	Reazioni fuori servizio	Reacções fora de serviço
A vide sans lest (ni train de transport) avec flèche et hauteur maximum.	Ohne Last, Ballast (und Transportachse), mit Maximalausleger und Maximalhöhe.	Without load, ballast (or transport axles), with maximum jib and maximum height.	Sin carga, sin lastre, (ni tren de transporte), flecha y altura máxima.	A vuoto, senza zavorra (no assali di trasporto) con braccio massimo e altezza massima.	Sem carga (nem trem de transporte) sem lastro com lança e altura máximas.